

SLOUGH MULTIFUEL EXTENSION PROJECT

Planning Inspectorate Ref: EN010129

The Slough Multifuel Extension Order

Land at 342 Edinburgh Avenue, Slough Trading Estate, Slough

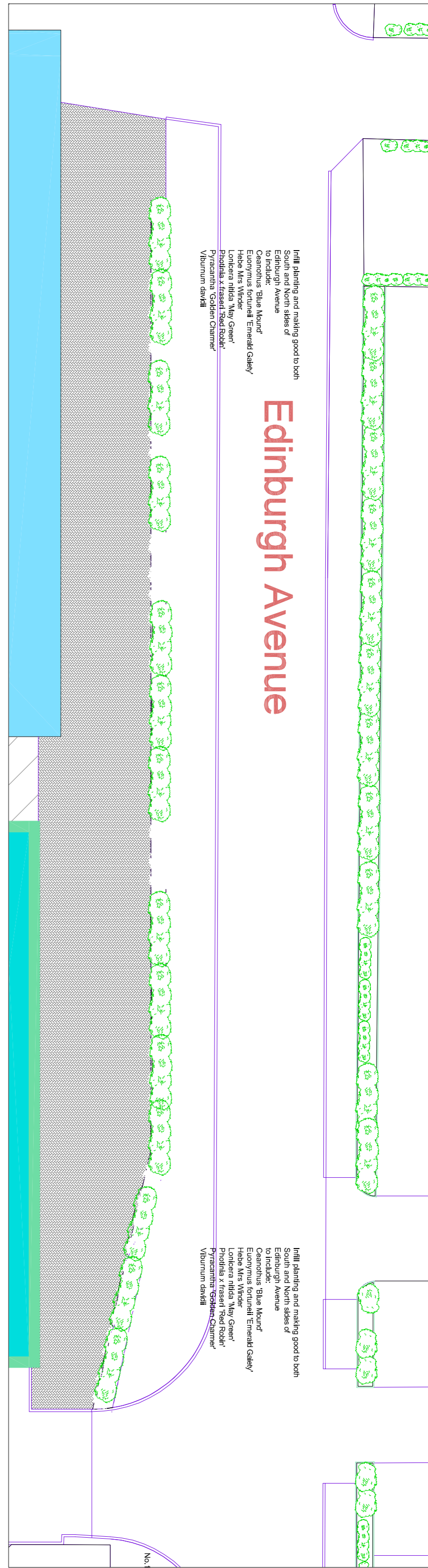
**Document Ref: 7.7.5 Condition 4 – Landscape and Planting Scheme
– Landscape Planting Plan**

The Planning Act 2008

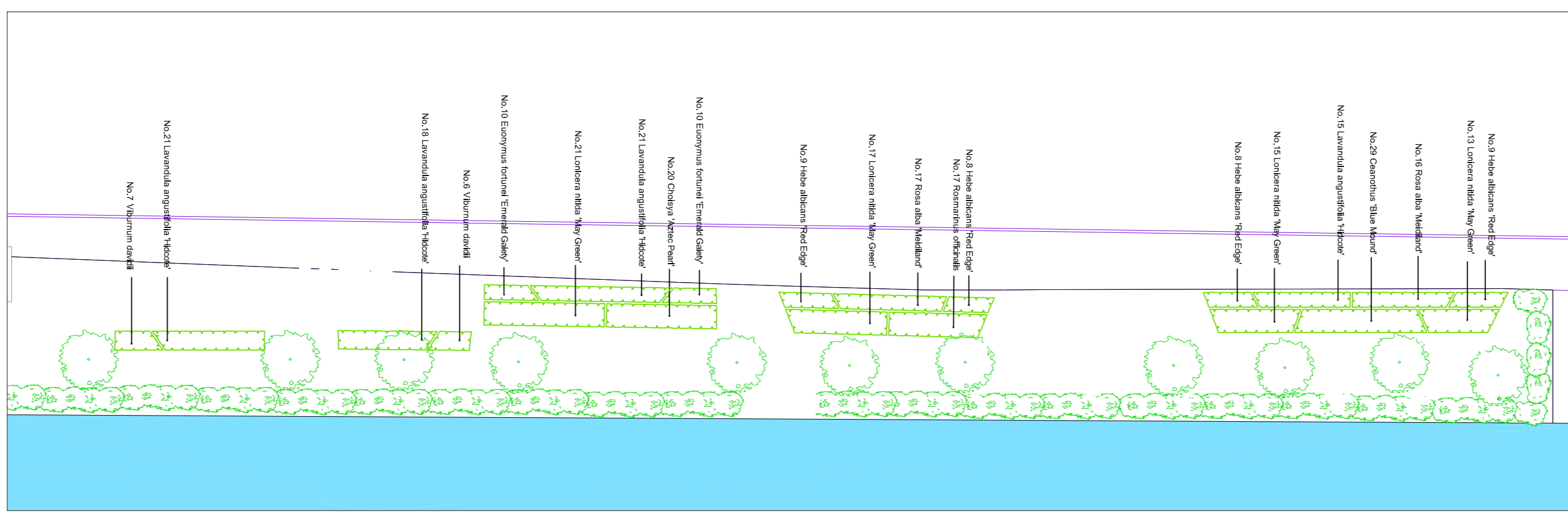


Applicant: SSE Slough Multifuel Limited

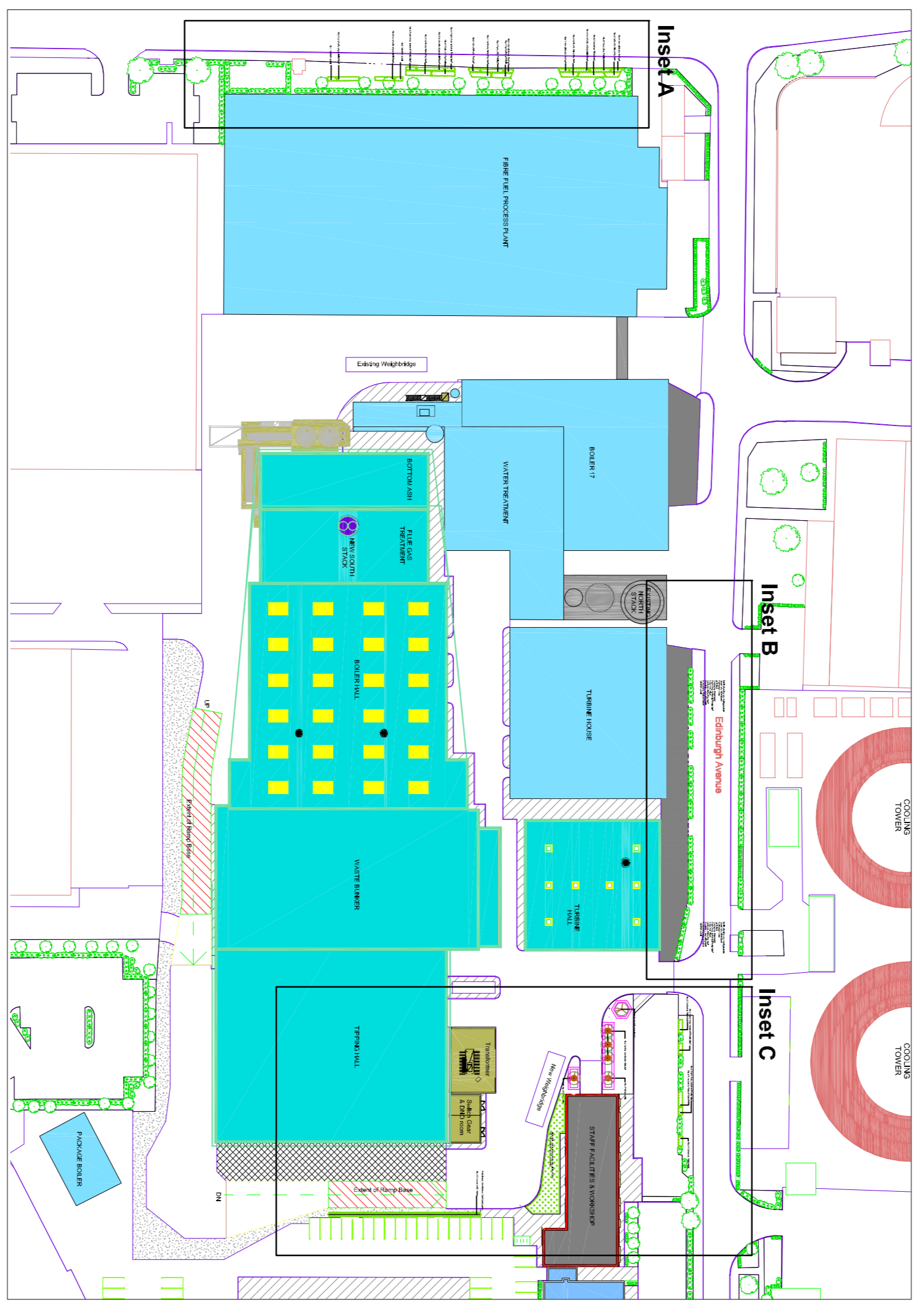
May 2023 – Deadline 5



Inset B - Edinburgh Avenue 1: 200 @ A1



Inset A - Fairlie Road 1: 200 @ A1



Key Plan 1:1000 @ A1

EXISTING TREE

EXISTING SHRUBS

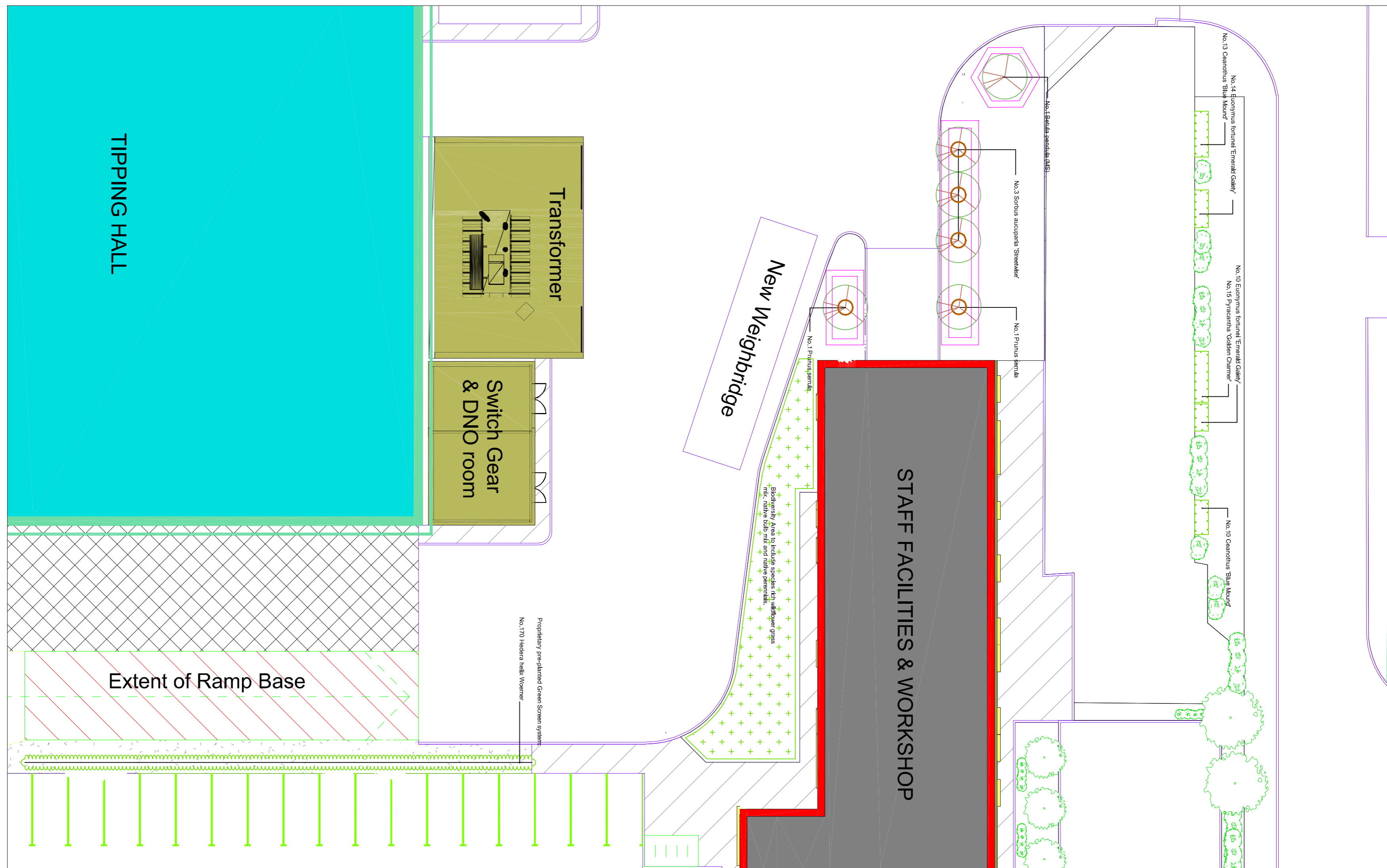
PROPOSED TREE

PROPOSED SHRUBS

BIODIVERSITY AREA

PROPOSED TREE WITH STONE CAGE

INDICATES EXISTING BUILDINGS REMAINING



Inset C - Workshop/Ramp 1: 200 @ A1

Species	Number	Density
Scilla pendula (MS)	Counted	Counted
Prunus serotina	Counted	Counted
Sorbus aucuparia	Counted	Counted

Species	Number	Density
Chamaecyparis 'Silber Nadel'	4/m ²	4/m ²
Euonymus 'Goldmispalme'	4/m ²	4/m ²
Hedera abietum 'Pied Edge'	4/m ²	4/m ²
Thuja occidentalis 'Smaragdgrün'	4/m ²	4/m ²
Yucca filamentosa 'Blue Chalk Striped'	4/m ²	4/m ²
Rosa alba 'Maiden'	4/m ²	4/m ²
Parthenocarpus officinalis	4/m ²	4/m ²
Viburnum davidii	3/m ²	3/m ²

Author	Date	Description
2.0	25.08.2020	VP
2.0	12.09.2020	VP

Scale	Weight	Author	Date
1:250 @ A1	1:250 @ A1	Hitachi Zosen Inova AG	

Project No.	P-3258
Document No.	50085001
Sheet	1 of 1
Project Name	Slough Multifuel
Author	Hitachi Zosen Inova AG

fira
firafirst
firafirst.co.uk

20288
LP2228